



Route 40



Route 40 Transit-Plus Multimodal Corridor Project

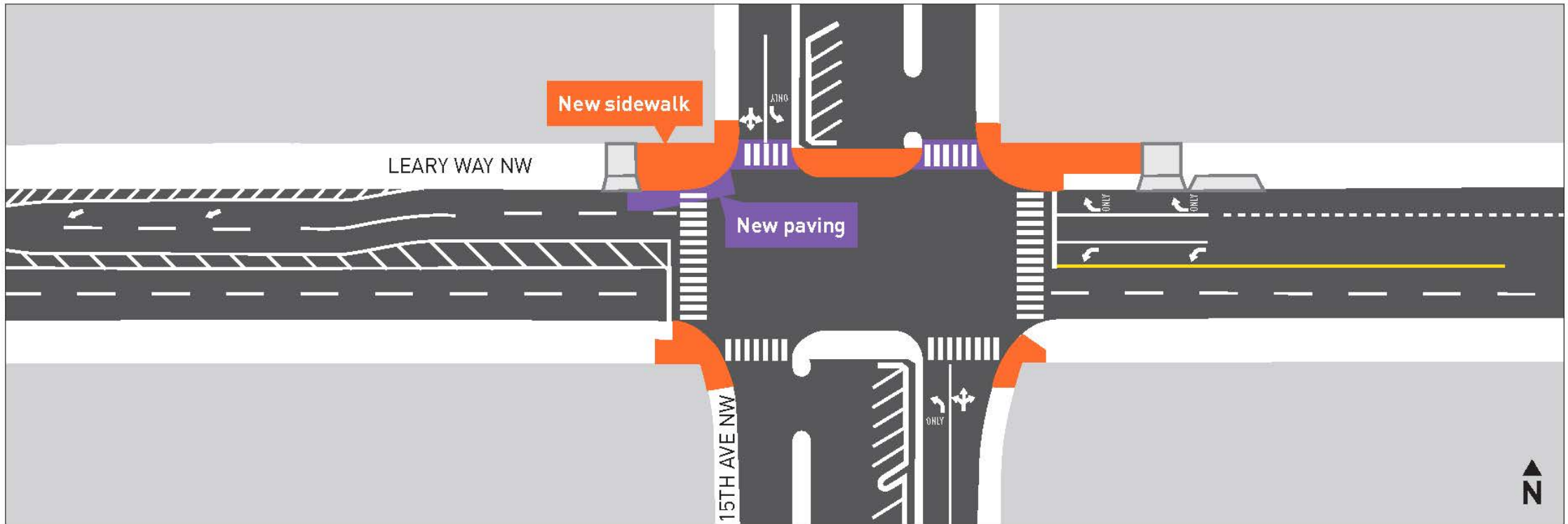
Preliminary Design Changes



Leary Way & 15th Ave



Route 40



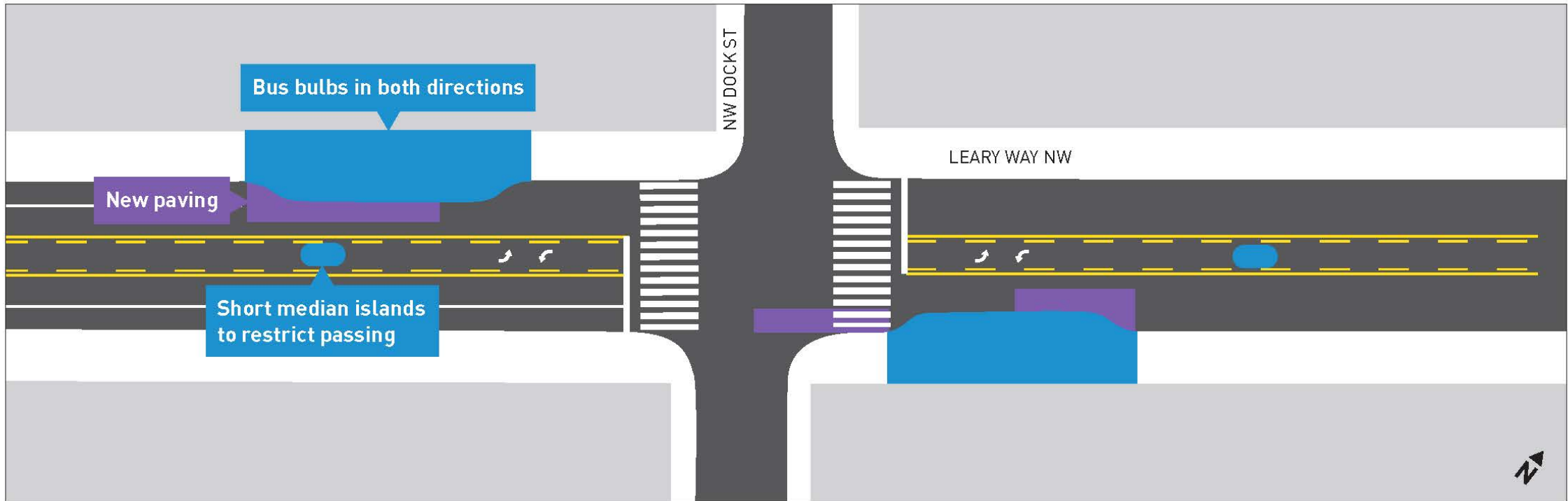
Preliminary Design Changes

- Refined sidewalk replacement limits and identified roadway paving

Leary Ave NW at NW Dock PI



Route 40



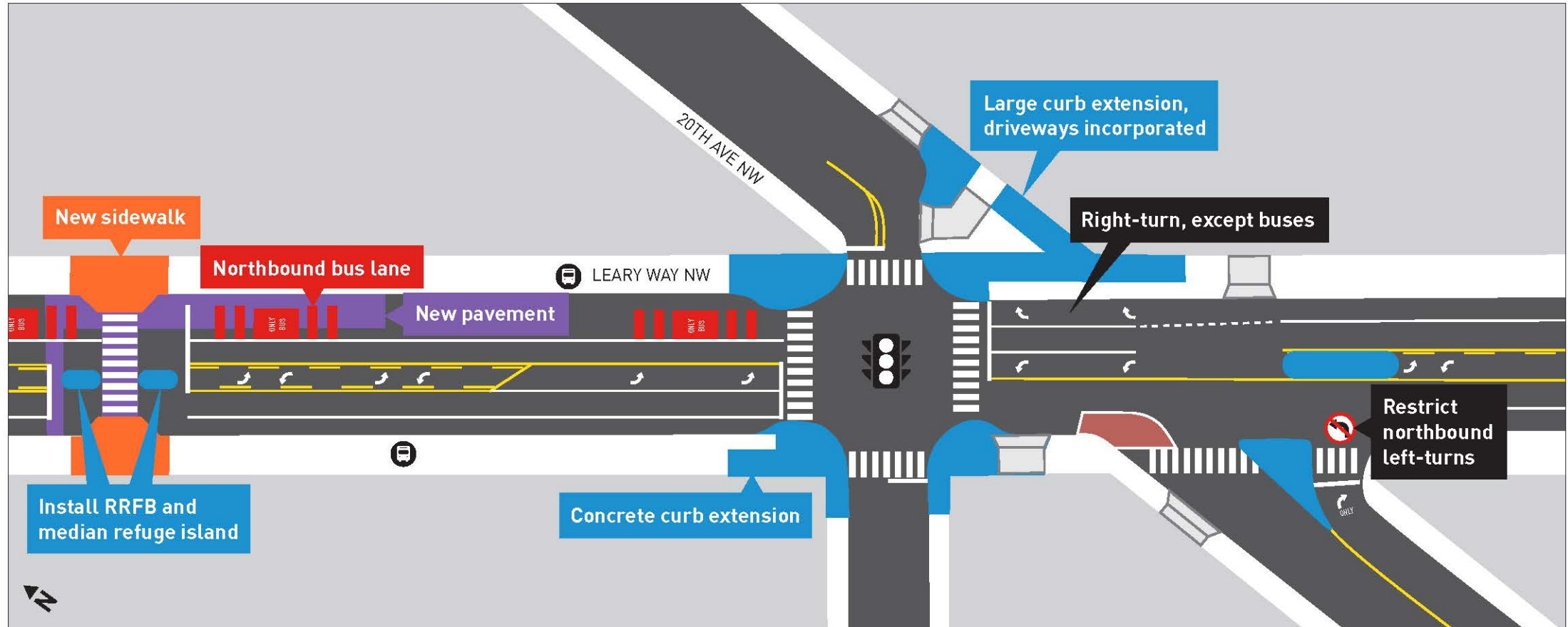
Preliminary Design Changes

- Identified bus bulb limits, refined sidewalk replacement limits, and identified roadway paving

Leary Ave NW at 20th Ave NW & Vernon Pl



Route 40



Preliminary Design Changes

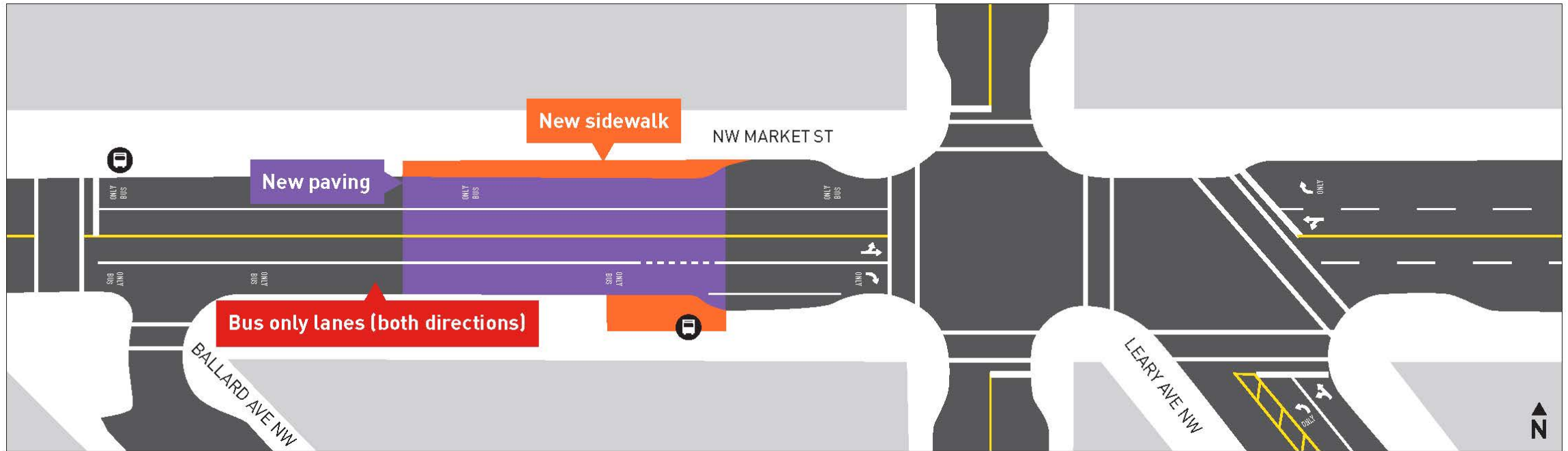
- Identified bus bulb limits, refined sidewalk replacement limits, and identified roadway paving

NW Market St Bus Lanes

between 24th Ave NW and 22nd Ave NW



Route 40



Preliminary Design Changes

- Refined bus bulb limits and identified roadway paving

Fremont Ave N

between N 34th St and N 35th St

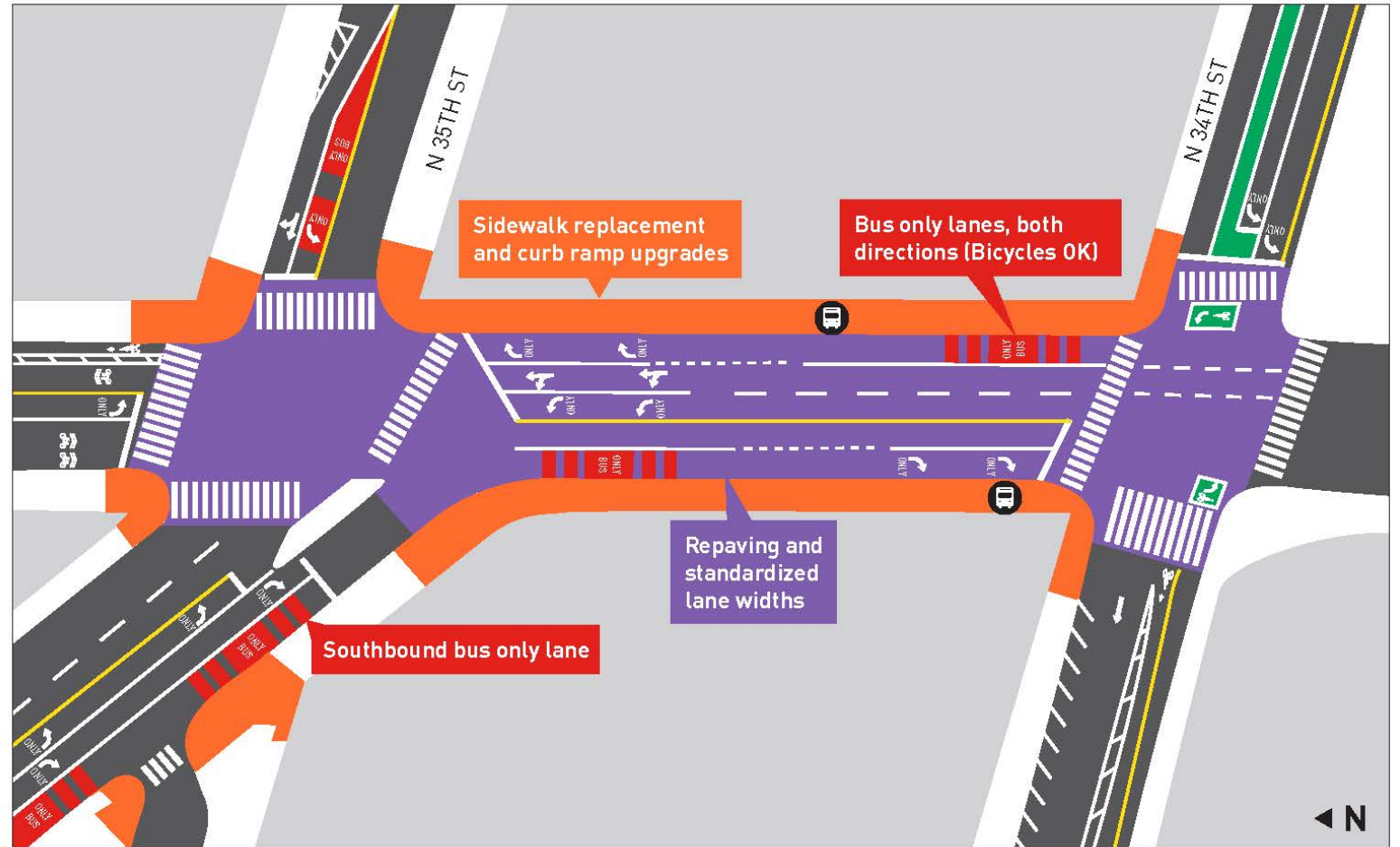


Route 40



Preliminary Design Changes

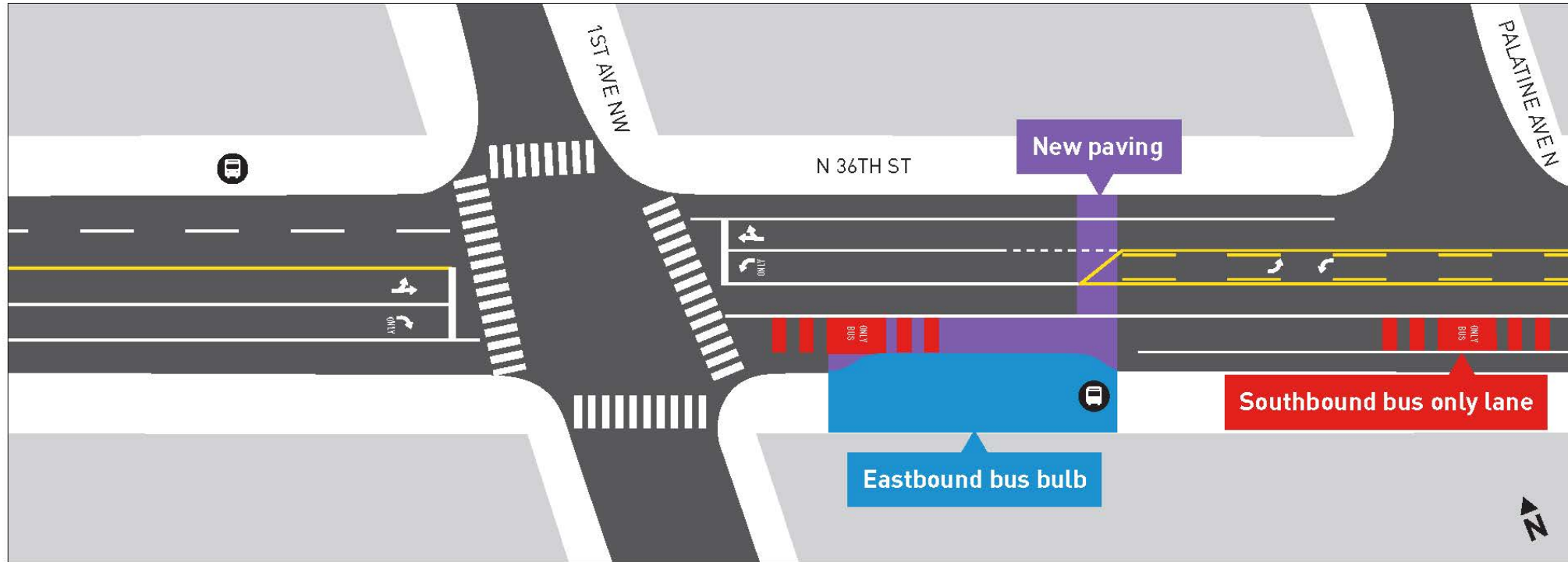
- Refined sidewalk replacement limits and identified roadway paving



N 36th St & 1st Ave



Route 40



Preliminary Design Changes

- Refined bus bulb limits and identified roadway paving

N 36th St at Phinney Ave

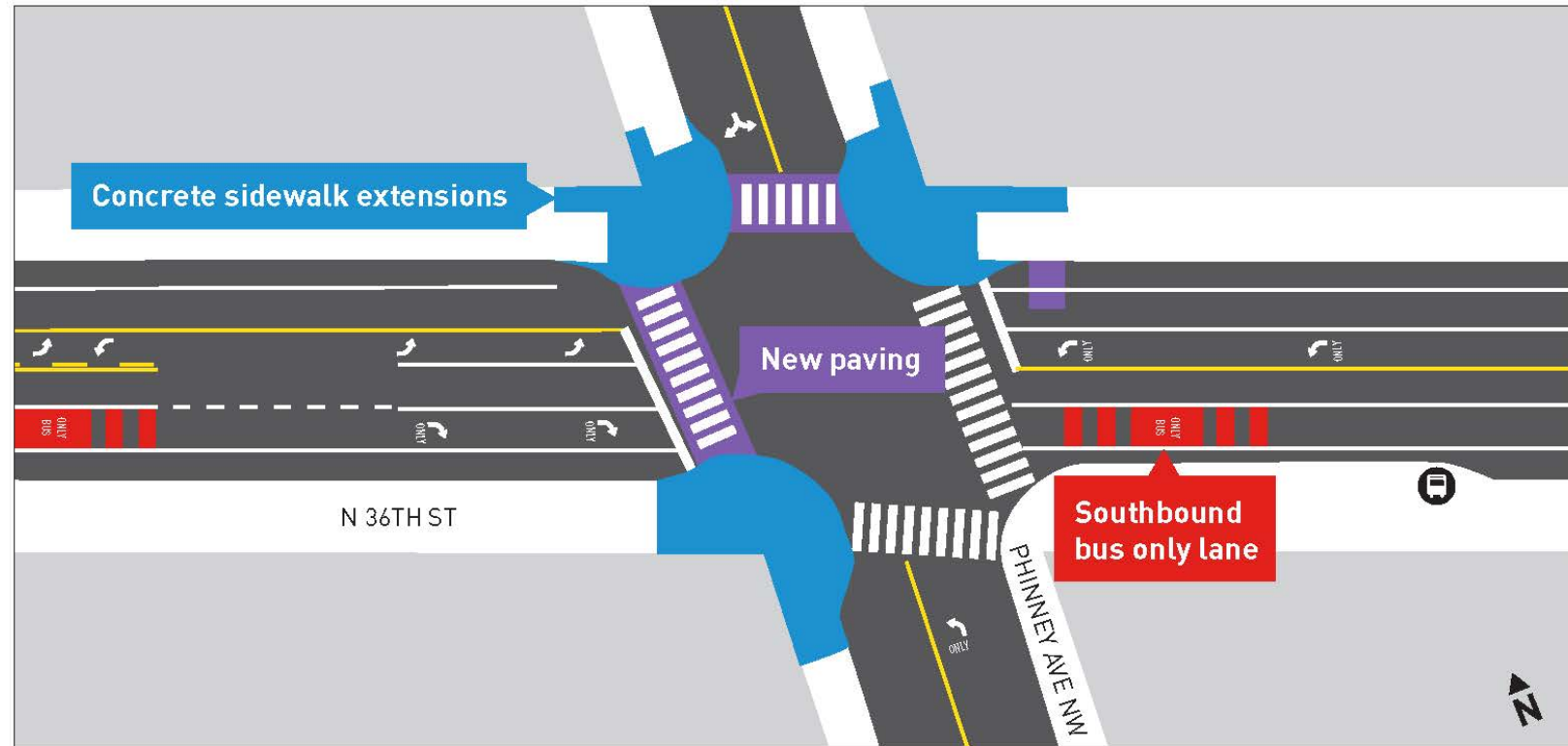


Route 40



Preliminary Design Changes

- Refined sidewalk replacement limits and identified roadway paving



N 36th St at Dayton Ave

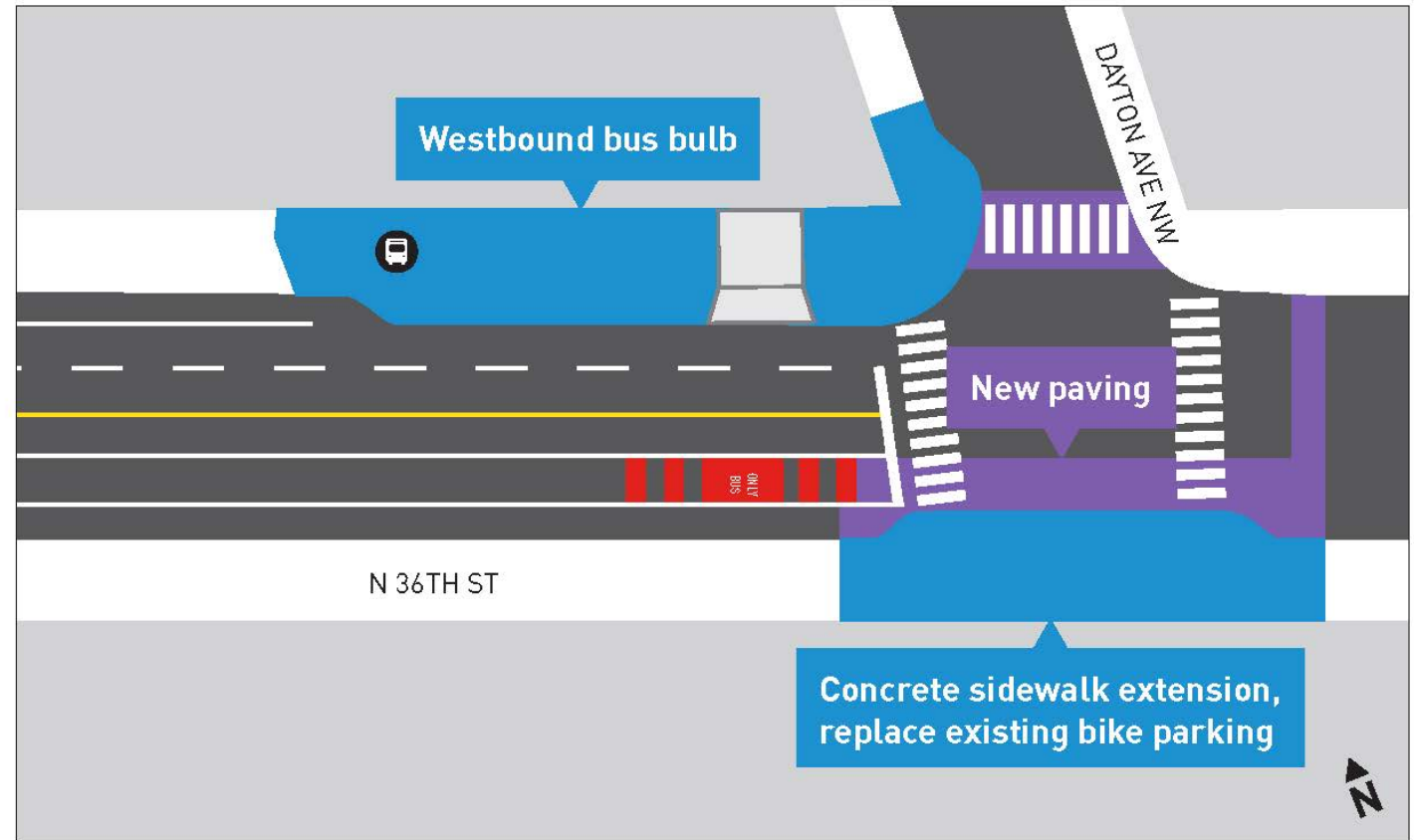


Route 40



Preliminary Design Changes

- Refined bus bulb limits and identified roadway paving





Route 40



Comments/Questions?

Route40@seattle.gov

<http://www.seattle.gov/transportation/route40>